



# COMPANY PROFILE

PT. Prima Energi Consult  
Engineering & Consulting

2026

[www.primaec.id](http://www.primaec.id)





## ABOUT US

Prima Energi Consult (PEC) is an Indonesian engineering and consulting firm specializing in the energy sector

Since 2009, PEC has delivered expert services in feasibility studies, engineering design, construction supervision, and due diligence across both conventional and renewable energy projects

With a growing focus on Renewable Energy, particularly in solar PV, battery energy storage systems (BESS), and smart grid integration, PEC is committed to supporting Indonesia's transition to a sustainable energy future





## VISION & MISSION



## VISION

“Aspire to be a Global Engineering & Consulting Company in Energy Industry”

## MISSION

- Extending network of highly qualified professional to build up competencies and expertise
- Build up strong base in capability and flexibility in embracing need of clients
- Providing innovative solution in engineering and consulting services to fulfill industry needs

## CORPORATE VALUE





## KEY PERSONNEL



**Widyaka Kartanegara, ST., M.M.**  
Founder  
Renewable Energy Expert

A strategic management professional serving as a Project Director for large-scale energy consulting assignments. He leads advisory teams for renewable energy potential mapping, electrification programs, and major power plant developments. His background includes operational management, supply chain optimization, and directing engineering projects across the oil, gas, and manufacturing industries.



**Ir. Imam Mashud**  
Principal Electrical Engineer /  
Transmission Expert

A highly experienced expert specializing in the engineering of transmission lines and substations. His career spans various phases from pre-feasibility studies to commissioning for major high-voltage projects (up to 500kV) and HVDC interconnections. He has held significant leadership positions within PLN and has delivered numerous Basic Engineering Designs (BED) and Front-End Engineering Designs (FEED)..



**Primanitya Swastyastu, SH., M.M.**  
Corporate Advisor for IPP Development

Senior energy executive with nearly 20 years of experience driving growth, transformation, and large-scale project development across renewable and conventional power sectors. Proven track record in originating and executing strategic investments, building high-value partnerships, and scaling energy platforms in complex, regulated markets. Recognized for strong leadership in Indonesia's energy transition, with deep expertise in stakeholder engagement, deal structuring, and project execution across wind, solar, gas, and emerging low-carbon solutions. .

# PEC MANAGERIAL



**Gilang Cahya Asmara, ST**  
General Manager/  
Senior Mechanical Engineer

Had experienced in various Power Plant, Transmission, Substation and Gas Facilities / Plant Project since 2011. Had been involved in various Prima Energi Consult Project such as Thermal Plant and Renewable Energy Plant. In Energy Consulting Services i.e: Energy Audit, Technical Due Diligence & Assessment, Feasibility Study, Front End Engineering Design (FEED), Detail Engineering Design (DED), Owner Estimate and Bidding Document, Design Supervision and Construction Supervision.



**Multi Rizki, ST**  
Business Delivery Manager /  
Senior Civil Engineer

A civil expert specializing in the energy sector, focusing on detailed engineering design, construction supervision, and project management. He manages business delivery for various renewable energy feasibility studies and has led civil engineering teams for power plant and transmission line projects. His technical skills include soil investigation analysis, foundation design, and techno-economic analysis



**Dzaky Satria Rahman Djuanda**  
Business Development Manager

Strong expertise in business development activities, including market analysis, client engagement, proposal development, and project coordination. Throughout his professional experience, he has been actively involved in various Renewable Energy projects across multiple sectors, contributing to opportunity identification, partnership development, and commercial strategy formulation.



**Ir. Riki Khomarudin, ST., M.T., IPP**  
Head of Power System and Grid  
Interconnection /  
Senior Electrical Engineer

Head of Power System & Grid Interconnection with expertise in power system analysis, renewable energy integration, and smart grid technologies. Experienced in leading hosting capacity, grid impact, and protection coordination studies for data centers and utility-scale projects, while ensuring regulatory compliance and system reliability. Proficient in ETAP, Python, and DlgSILENT, with a strong track record in solar, wind, and BESS integration to support resilient and sustainable energy systems.



**David Setianto Yustus, ST**  
Head of PV and Energy Storage System /  
PV and Energy Storage Engineer

Head of PV and Energy Storage System with strong expertise in Solar PV design, simulation, and renewable energy project development. Experienced in leading feasibility studies, technical due diligence, and energy yield assessments using tools such as PVSyst, Helioscope, and HOMER Pro, while overseeing the deployment of hybrid off-grid systems, floating solar, and utility-scale PV projects. Proven ability to drive strategic execution and optimize solar and energy storage solutions to deliver reliable, efficient, and sustainable energy outcomes.



## CONSULTING SERVICES



## ENERGY CONSULTING

1

### Renewable Energy

PEC provides engineering services for Solar PV, Wind, Geothermal, Biomass, Hydrogen, and Hydro Power

2

### Substation & Transmission

PEC provides engineering services for 70kV, 150 kV, 275 kV & 500 kV Transmission Line and Substation

3

### Thermal Power Plant

PEC provides engineering services for Gas based power plant, including Technical Due Diligence for existing plants

## CONSULTANCY SOLUTIONS

1

### Consultant for Owner

PEC provides Owner Consultant services such as Site Survey, Topography, Bathymetry, Soil Investigation, Feasibility Study, FEED, Design Review, and Construction Supervision

2

### Consultant for EPC

PEC provides EPC Contractor services such as Site Survey, Topography, Bathymetry, Soil Investigation, and Detailed Engineering Design.

3

### Other Consultancies

Technical Due Diligence of existing power plant  
Training (Renewable Energy, Transmission and Substation)  
and Market Study

# PEC

## OUR SERVICES



### FEASIBILITY STUDY

- ▶ Grid Impact Study
- ▶ Site Investigation (Topography, Bathymetry, Hydrology)
- ▶ AMDAL ESIA
- ▶ Social Study
- ▶ Technology Assessment
- ▶ Market Study
- ▶ Financial Modeling
- ▶ Transportation & Distribution Study
- ▶ Electrical Transmission & Substation

### ENGINEERING SERVICES

- ▶ Conceptual Design
- ▶ Basic Engineering Design
- ▶ Front End Engineering Design
- ▶ Detailed Engineering Design
- ▶ Retrofit and Optimization

### CONSTRUCTION SERVICES

- ▶ Project Management
- ▶ Project Design Review
- ▶ Project Construction Supervision
- ▶ Commissioning Services
- ▶ Quality Assurance/Quality Control (Local/International)

### ADVISORY & TRAINING

- ▶ Policy and Regulation
- ▶ Economic and Industrial Outlook
- ▶ Market Insight
- ▶ Corporate Action and Business Risk Analysis
- ▶ Corporate Training



Renewable Energy

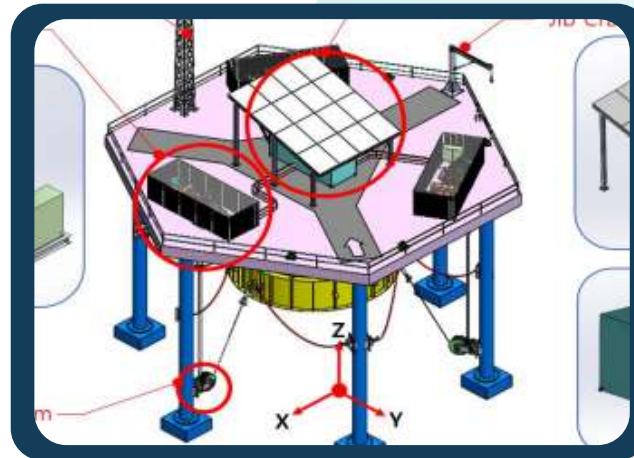
## Solar PV Project



Pre-Feasibility Study for Offshore Floating Solar Photovoltaics in Sulawesi



Consultancy Services for the Preparation of the Electricity Supply Master Plan Integrated with Solar PV and Biomass Energy Sources

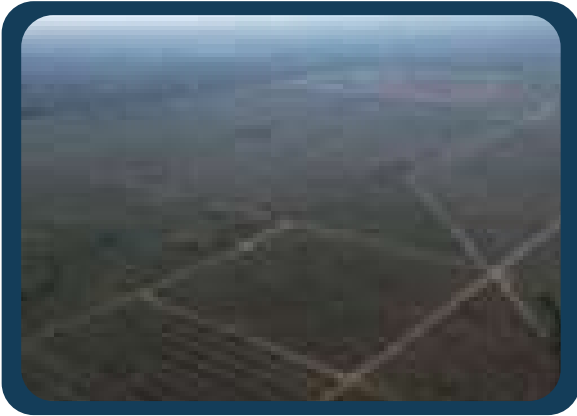


Electrical Detail Engineering Services for INWaveTM Wave Energy Converter Structure



## Renewable Energy

## Solar PV Project



Preliminary Technical Due Diligence Study of  
@100 MWac Solar PV Plant  
Pasuruan & Banyuwangi, East Java



Feasibility Study of Hybrid Solar PV System  
(10 MWp & 6 MWh BESS) with Diesel Generator  
Morotai Island, Indonesia



Preliminary Feasibility Study of  
100 MWac Floating Solar PV  
South Kalimantan, Indonesia



Soil Investigation & Civil Engineering Study  
of 32 MWp Solar PV Plant  
West Java, Indonesia



Environmental & Social Study (ESIA)  
2 Locations of Floating Solar PV Power Plant  
West Sumatera & West Java, Indonesia

# Rooftop Solar PV Project



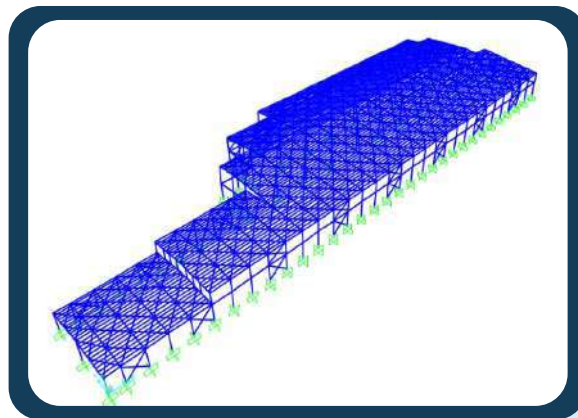
Structural & Roof Assessment at  
PT Rapid Plast Indonesia,  
East Java, Indonesia



Structural & Roof Assessment at  
PT Bayer (3770 kWp)  
West Java, Indonesia



Structural & Roof Assessment at  
Lotte Chemical Titan (35.000 m2)  
Banten, Indonesia



Structural & Roof Assessment at  
Storage Warehouse  
in West Java, Indonesia



Structural & Roof Assessment at  
Danone Mekarsari Solar PV Rooftop Project  
West Java, Indonesia



Renewable Energy

# Wind Turbine Project



Tolo#1 Wind Farm Power Plant 72 MW  
Design Review ,  
South Sulawesi, Indonesia



Tolo #1 Wind Farm Power Plant 72 MW  
Special Facilities Study  
South Sulawesi, Indonesia



Tolo#1 Wind Farm Power Plant 72 MW  
Construction Supervision & Commissioning  
South Sulawesi, Indonesia



Pre-Feasibility Study for 100 MW  
Wind Power Plant  
North Sumatera, Indonesia



Pre-Feasibility Study for 100 MW  
Wind Power Plant  
South Sulawesi, Indonesia

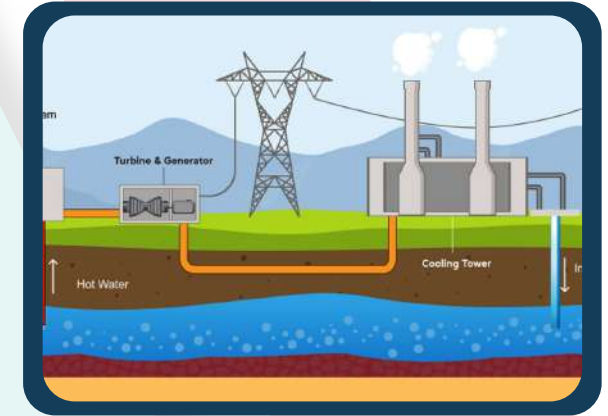
# Geothermal Project



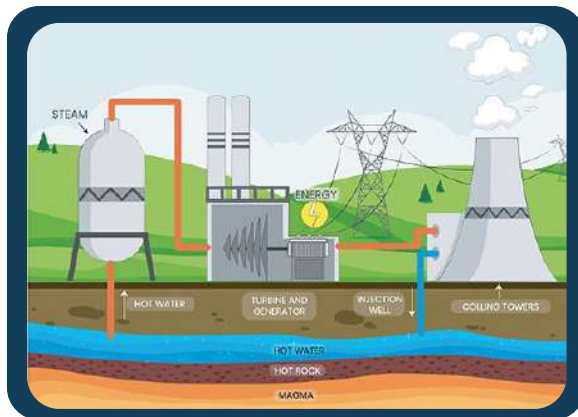
Technical Due Diligence of Indonesia Geothermal Asset



Feasibility Study of Retrofit Geothermal Power Plant Kamojang (Unit 2&3) 2x55MW



Technical Service Support for IPP Price Negotiation Geothermal Power Plant 60MW



Design Engineering for PLTD 120 MW & Geothermal 5 MW



FEED Engineering Consulting Services Geothermal Power Plant 2 x 55 MW

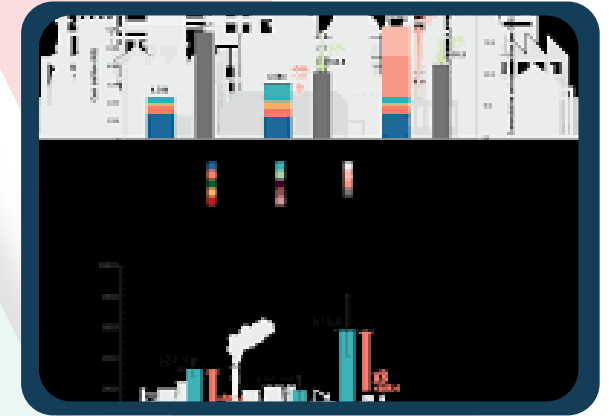
# Thermal/Fossil Project



Feasibility Study of 450 MW  
Combined Cycle Power Plant (CCPP)  
in Sumatera, Indonesia



Preliminary Study of  
Coal Fired Power Plant for Mining Facilities  
in Central Kalimantan, Indonesia



Lenders Technical Advisory  
of Coal Fired Power Plant  
in Riau Island, Indonesia



Lender Technical Advisory for Alumunium Smelter  
& Coal Fired Power Plant  
in East Kalimantan, Indonesia



Construction Supervision and  
Quality Assurance/Quality Control  
PLTU Asam-Asam Unit 3 & 2 X 65 MW



North Halmahera, Diesel Engine Power Audit



Remaining Life Assessment Boiler System of Sekayan Coal Fired Steam Power Plant 1 x 7,5 MW - North Kalimantan, Indonesia



Technical Assessment for Power Generation Asset (Diesel Power Plant Pontianak & Diesel Power Plant Medan)



Remaining Life Assessment of Boiler Service for Coal Fired Steam Power Plant 15 MW



Operation and Technical Assessment of Coal Fired Steam Power Plant 15 MW (Aceh)



Preliminary Operation & Maintenance Assessment Dual Fuel Power Plant 2 x 63 MW in Berau, East Kalimantan



150 kV Transmission Line Preliminary Study for 250 MWp Solar PV Farm East Kalimantan, Indonesia



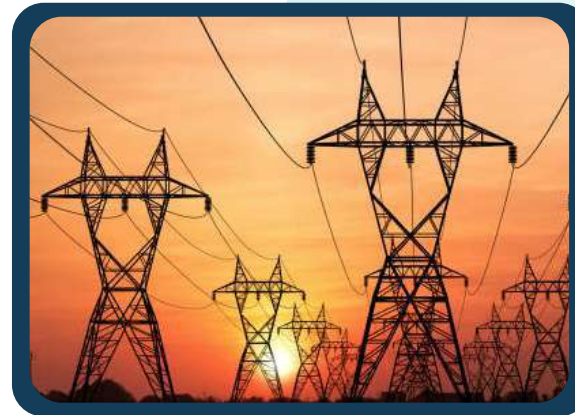
500 kV Transmission Line Preliminary Study for 5.15 GW Hydro Electric Power Plant North Kalimantan, Indonesia



230 kV Pre-Feasibility Study Transmission Line for 300 MW Solar PV Farm (Batam - Singapore) Batam, Indonesia



33 kV Transmission Line Preliminary Study for 26.8 MWp Solar PV Farm Sumbawa, Indonesia



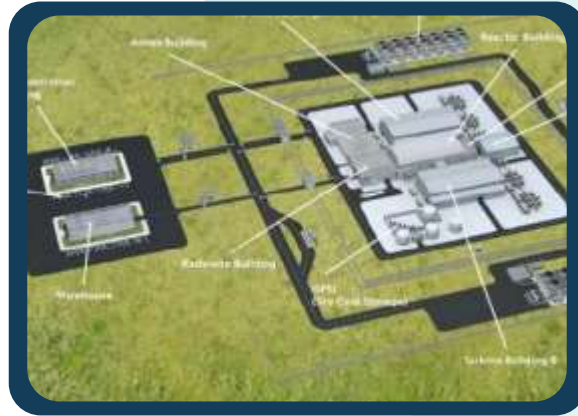
70 kV Transmission Line Preliminary Study for Data Centre (25 MW) South Kalimantan, Indonesia



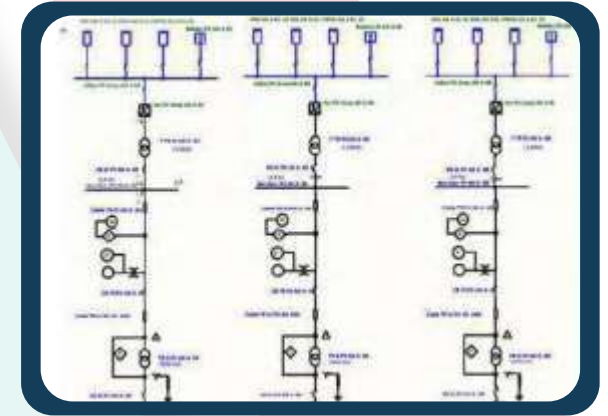
Feasibility Study of 500 kV Underground Cable 2×2000 MVA Transmission Line near Surabaya Airport



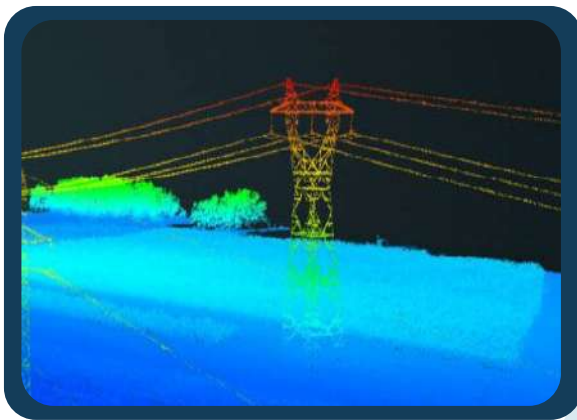
Grid Integration Study of Morotai-3 Hybrid Solar PV System Project, North Maluku



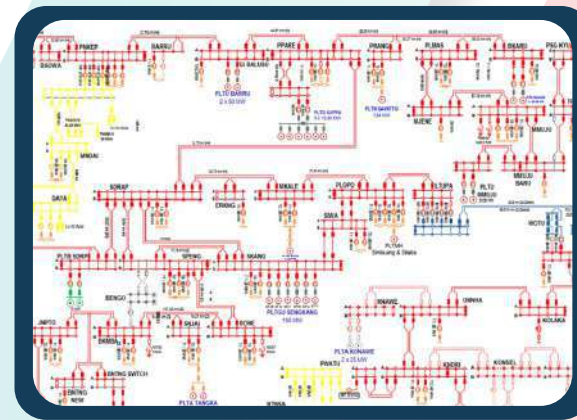
Electrical Grid Impact Study for Nuclear Power Plant in West Kalimantan



Pre-Feasibility Study for Renewable® Project



Electrical Grid Study for Solar PV System Project 1.76 MVA - at PT Yamaha Motor Parts Manufacturing, Karawang, West Java



Implementation of Feasibility Study for Power Plant Development

# Technical Due Diligence



Technical Due Diligence of Indonesia Geothermal Asset



Due Dilligence Service for Diesel Power Plant in East Halmahera



Technical Due Diligence PT. APESI for PT. PJB in Surabaya, East Java



Construction Supervision for Apparel Production Factory Development in Banten

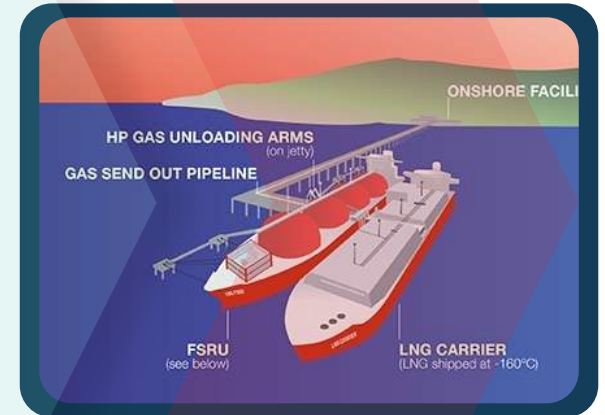
# Piping Gas/Oil Project



Detail Engineering Design  
of Fuel Pipeline Re-route  
South Sulawesi, Indonesia



Basic Engineering Design & Cost Estimation  
of Fuel Pipeline Re-route  
South Sulawesi, Indonesia



Economic Study & Logistics Planning  
of Gas Supply for New Scattered Gas Power Plant  
in Indonesia



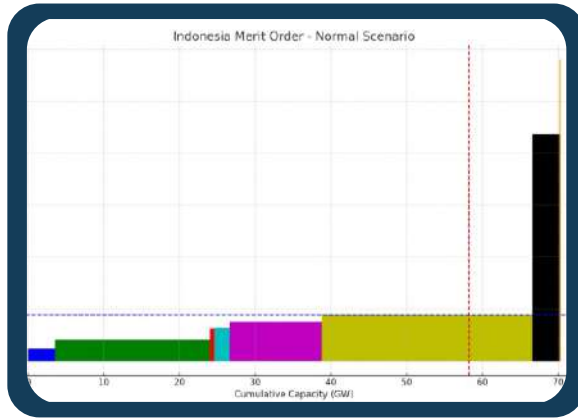
Soil Investigation for 32.5 MW  
Ground Mounted Solar PV Plant  
West Java, Indonesia



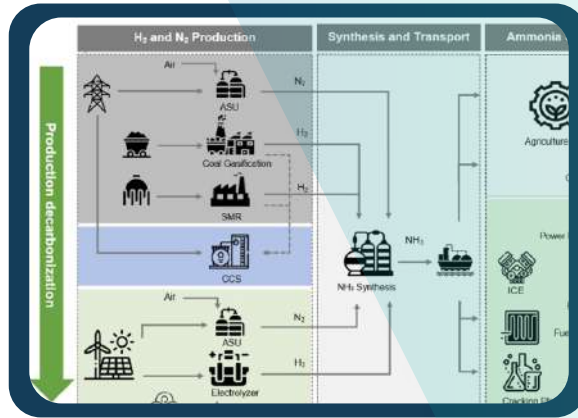
Lidar Topography Survey for 32.5 MW  
Ground Mounted Solar PV Plant  
West Java, Indonesia)



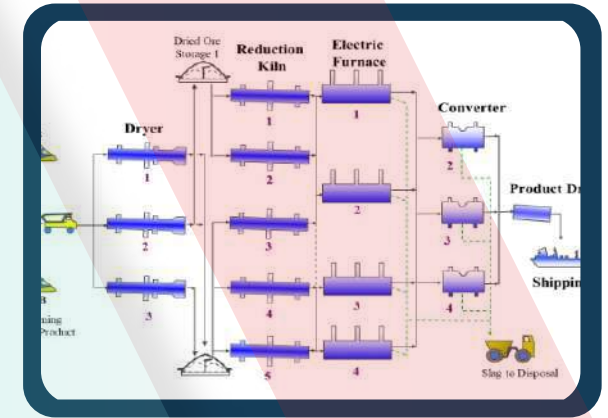
Soil Investigation, Topography & Bathymetry Survey  
for Jetty Facility of Coal Fired Power Plant  
in East Nusa Tenggara, Indonesia



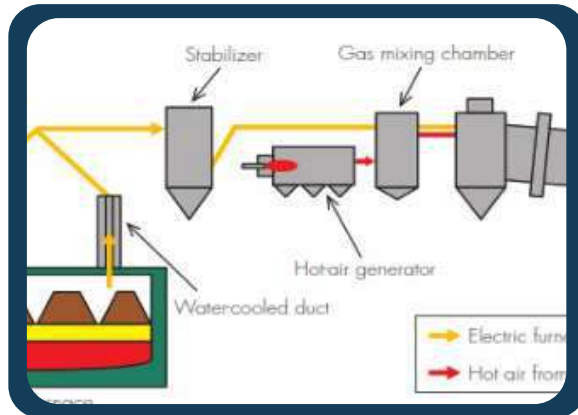
Energy Market Study in Sumatra, Indonesia



Ammonia Market Study in Indonesia



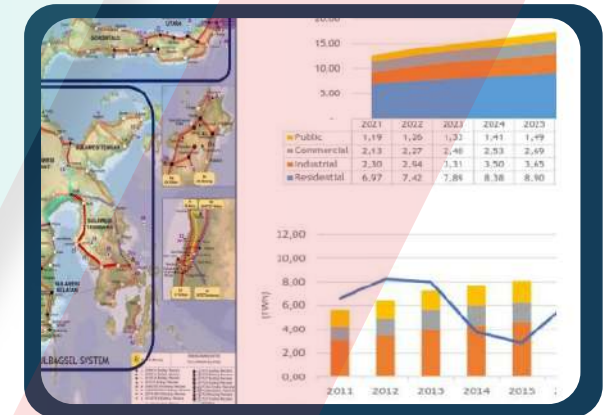
Mapping Renewable Energy Alternative for On-Grid Coal-Fired Power Plants in Indonesia



Preliminary Feasibility Study of Manufacturing Biochar from Biomass South Sulawesi, Indonesia



Training Services of Renewable Energy, Thermal Energy, Transmission Line & Substation



Hydro Power Market Study in Sumatra & Sulawesi Indonesia

No	Project Name	Client	Year	Type of Project
1	Grid Connection Studies and Power Quality Analysis Nusa Penida	IESR	2026	Grid study
2	Grid Connection and Impact Study in West Kalimantan	ACEN	2026	Grid study
3	Grid Connection and Impact Study in North Sumatera	ACEN	2026	Grid study
4	Grid Connection and Impact Study in Kalimantan	ACEN	2026	Grid study
5	Grid Integration Study of Morotai-3 Hybrid Solar PV System Project, North Maluku	PT UPC Renewables Indonesia	2025	PV Grid Study
6	Mapping Multi-Source Renewable Energy Integration (Solar PV, Wind, Hydro, Geothermal, and Biomass) as Alternatives for Decarbonizing On-Grid Coal-Fired Power Plants in Indonesia	IESR	2024	FS Market Study Grid Study PV Wind Hydro Geothermal biomass
7	Grid Connection and Impact Study in Central Kalimantan	ACEN	2026	Grid study
8	Electrical Grid Impact Study for Nuclear Power Plant in West Kalimantan	SMEC	2023	Grid Study Nuclear
9	Pre-Feasibility Study for Renewable® Project: Multi-Site Selection (4 x 60 MW Solar PV) and Hydrogen Generation Plant Integration	PT HDF Energy Indonesia	2023	FS PV Grid Study
10	Due Dilligence Service for Diesel Power Plant in East Halmahera	Reconsult	2021	Due Diligence Grid Study
11	Review RUPTL and Feasibility Study of PT KP Plant	PT KRAKATAU POSCO	2019	FS Grid Study
12	Implementation of Feasibility Study for Power Plant Development	PT PINDO DELI	2019	FS Grid Study
13	Pre-Feasibility Study for IPP KALTIM 3 & KALTIM 6 CFPP (@ 1×200 MW) in East Kalimantan	PT. Sarana Nugraha Selaras	2016	FS Grid Study

No	Project Name	Client	Year	Type of Project
1	Consultancy services for an Advisory Assignment of Capacity Development Program for Energy Transmission in Indonesia	Sweco	2026	Advisory Transmission
2	Feasibility Study of a Blue Sky 450 MW Combined Cycle Power Plant (CCPP)	SMEC International PTY LTD	2025	FS Transmission Interconnection
3	Transmission Line Basic Design Services for Wind Farm Project in West Java	PT ACEN Development Indonesia	2025	Wind Transmission
4	Inventory Survey, Compensation Payment of Land, Buildings and or Foundation for Additional Area Outside 275 kV RoW	PT North Sumatera Hydro Energy	2025	Survey Transmission
5	Tree felling and cutting services in the tree cutting permit (PKKNK) area of 39,4 ha Batangtoru HEPP project	PT North Sumatera Hydro Energy	2025	Survey Transmission
6	Consultancy Services for the Preparation of the Electricity Supply Master Plan for Integrated Industrial Estate	PT Bright Sinergi Global	2025	Transmission
7	Capacity development program for energy transmission in Indonesia, and for electrification of Transjakarta buses in Jakarta	Sweco International AB	2025	Capacity Development transmission
8	Electrical Detail Engineering Services for INWaveTM Wave Energy Converter Structure	INGINE WAVE ENERGY SYSTEMS LTD	2025	Transmission Solar PV Design
9	BKM Copper Project 20kV Transmission Network in Central Kalimantan	PT KALIMANTAN SURYA KENCANA	2024	Transmission
10	150KV Transmission Line of 200MW Ground Mounted Solar PV Power Plant Muara Kaman East Kalimantan.	PT ACEN Development Indonesia	2024	Transmission PV
11	Study of New Route Evaluation and Selection using MCDM (Multi-Criteria Decision Making) of 500 kV Transmission Line in Kalimantan, Indonesia	Private Client	2023	Transmission
12	Preliminary Design of 500kV Transmission Line between 2 (Two) Green Industrial Area in Kalimantan, Indonesia	Private Client	2023	Transmission Design



# Transmission Study Experience List

No	Project Name	Client	Year	Type of Project
13	33 kV Double Circuit Transmission Line Connection Study of 26.8 MWp Sumbawa Solar PV Power Plant to System	Trina Solar	2022	PV Transmission
14	70 kV Substation & Transmission Line Engineering Consultancy	Private Client	2022	Transmission
15	Pre-Feasibility Study Batam Singapore Solar PV Electrical Transmission	SMEC Denka	2022	PV Transmission FS
16	Preliminary Design of 500 kV Transmission Line Route from Hydro Electric Power Plant to Green Industrial Area in Kalimantan, Indonesia	Private Client	2021	Transmission Design
17	Preliminary Special Facilities Study of Kubu Solar PV Power Plant 25MWp	VENA Energy	2019	PV Transmission PLN
18	Integration Management of Special Facilities Wind Power plant 60 MW.	Equis Energy - PT. Energi Bayu Jenepono	2017	WIND Transmission
19	FS Underground Cable 500KV 2x2000 MVA Transmission Line, near Surabaya Airport	PT Tractebel Engineering Indonesia	2017	Transmission PLN FS
20	Engineering Estimate for Transmission Line and Substation 275kV & 150kV, PLTU SUMUT 2 2x330MW	PT Rekadaya Elekrika	2017	Transmission PLN
21	Preliminary Special Facilities Study for Solar PV Power Plant 50 MWp	PT Infrastruktur Terbarukan Dinamika / Vena Energy Group	2017	PV Transmission
22	Special Facilities Study for Wind Farm Power Plant in Tolo, South Sulawesi	PT Energi Bayu Jenepono (EBJ) / Vena	2016	Transmission PLN Wind

No	Project Name	Client	Year	Type of Project
1	Consultancy Services for the Preparation of the Electricity Supply Master Plan Integrated with Solar PV + BESS and Biomass Energy Resources in Riau Province	PT Abiyasa Cipta Makmur	2025	PV Biomass FS
2	Pre-Feasibility Study for Offshore Floating Solar Photovoltaics in Sulawesi	IESR	2025	FS Solar PV
3	Mapping Multi-Source Renewable Energy Integration (Solar PV, Wind, Hydro, Geothermal, and Biomass) as Alternatives for Decarbonizing On-Grid Coal-Fired Power Plants in Indonesia	IESR	2024	FS Market Study GridStudy PV Wind Hydro Geothermal biomass
4	Structural Assessment for Rooftop PV System at PT Bayer	Cleantech Solar Indonesia	2024	PV Structure Rooftop Assessment
5	Roof & Structure Study for Solar PV System in Cibinong, Bogor, West Java	Cleantech Solar Indonesia	2024	PV Structure Rooftop
6	Structural Assessment for Rooftop PV System at PT CS2	Cleantech Solar Indonesia	2024	PV Structure Rooftop Assessment
7	Structure Assessment for Rooftop Solar PV System in Jombang, East Java	Cleantech Solar Indonesia	2024	PV Structure Rooftop Assessment
8	LEI's Building - Roof, Structure & Ladder Study for Rooftop Solar System	INECOSOLAR	2024	PV Structure Rooftop
9	Roof Structure Analysis of 264 kWp PV System in Bekasi, West Java	INECOSOLAR	2024	PV Structure Rooftop
10	Structure Assessment for Rooftop Solar PV System at PT Rapid Plast Indonesia, East Java	Cleantech Solar Indonesia	2024	PV Structure Rooftop Assessment
11	Owner Engineer of Solar PV Rooftop 13.9 kWp Installation at PII Building	PII (Persatuan Insinyur Indonesia)	2024	FS PV Rooftop
12	Preliminary Feasibility Study for Solar PV, Wind, And Energy Storage in Indonesia	IESR	2024	PreFS PV Wind
13	Preliminary Technical Due Diligence Study of @100 MWac Solar PV Plant in Pasuruan & Banyuwangi, East Java	PT Vena Energy Indonesia	2024	Assessment PV
14	Technical Potential for Solar PV Rooftop Estimation using Helioscope (PII Building)	PII (Persatuan Insinyur Indonesia)	2023	FS PV Rooftop

No	Project Name	Client	Year	Type of Project
15	Pre-Feasibility Study for Renewable® Project: Multi-Site Selection (4 x 60 MW Solar PV) and Hydrogen Generation Plant Integration	PT HDF Energy Indonesia	2023	FS PV Grid Study
16	Structural & Roof Assessment at Lotte Chemical Titan, Cilegon	PT GREEN ENVIRONMENT TECHNOLOGY	2022	PV Structure Rooftop Assessment
17	Pre-Feasibility Study Batam Singapore Solar PV Electrical Transmission	SMEC Denka	2022	PV Transmission FS
18	Structural & Roof Assessment for Solar PV for Tyre Plant Citeurep	Total Solar (PT TATS Indonesia)	2021	PV Structure Rooftop Assessment
19	Civil Study and Technical Assistant Service of 32 MWp Solar Farm in Citeureup, West Java	PT Surya Utama Nuansa	2021	PV Hydrology Civil
20	Structural & Roof Assessment for Solar PV Power Plant at Shoe Factory Building in Salatiga	Total Solar (PT TATS Indonesia)	2020	PV Structure Rooftop Assessment
21	Structural & Roof Re-Assessment for Solar PV Power Plant at Shoe Factory Building in Salatiga	Total Solar (PT TATS Indonesia)	2020	PV Structure Rooftop Assessment
22	Structural & Roof Assessment for Solar PV Power Plant in Malang Building	Total Solar (PT TATS Indonesia)	2020	PV Structure Rooftop Assessment
23	Environmental & Social Assessment Service of Floating Solar PV Power Plant at 2 Locations in Indonesia	Black & Veatch	2019	FS PV
24	Structure Assessment Service of Danone Mekarsari Solar PV Rooftop Project	Total Solar (PT TATS Indonesia)	2019	PV Structure Rooftop Assessment



# Civil Study Experience List

No	Project Name	Client	Year	Keywords
1	Survey Topography Pond Area For 32.5 MWp On-Grid Solar Photovoltaic System at PT Indocement Tunggal Prakarsa, Citeureup	PT. SUMBERDAYA PEMBANGUNAN ENERGI/SUN ENERGY	2024	PV Topography
2	Civil Study Consultancy Service University of Tanjungpura, Pontianak	PT Surya Utama Nuansa	2022	Civil
3	Civil Study and Technical Assistant Service of 32 MWp Solar Farm in Citeureup, West Java	PT Surya Utama Nuansa	2021	PV Hydrology Civil



# Partner & Clients



PLN



**PERTAMINA**  
GEOTHERMAL ENERGY



PLN  
Enjiniring



PLN  
Nusantara Power Construction



**smec**  
an **Su** company

**AECOM**



**worley**  
DELIVERING SUSTAINABLE CHANGE



**VENA ENERGY**



**FLSMIDTH**

**aurecon**



**TOTAL SOLAR**



**BLACK & VEATCH**

**TRACTEBEL**



**DANONE**  
ONE PLANET. ONE HEALTH



**Trina solar**



**ACEN**



**CLEANTECH SOLAR**



**COMO ENGINEERS**

**KRAKATAU POSCO**



**Quint Solar Indonesia**

**reCONSULT**  
Trusted Partner



**pindo deli**  
paper products



**KHN**  
PT Kayan Hydropower Nusantara

**SUN ENERGY**



**GETI BUMA**

**INECO SOLAR**  
A Yinson Renewables company



**IESR**  
Institute for Essential Services Reform

**KYUDENKO**



**Kalimantan Surya Kencana**



[www.primaenergiconsult.com](http://www.primaenergiconsult.com)

Victorian Bintaro Business Park Blok B5  
Jl. Bintaro Utama Sektor 3A  
Bintaro Jaya, Tangerang, Banten, 15224  
Phone : 021-7372103  
E-mail : [info@primaenergiconsult.com](mailto:info@primaenergiconsult.com)